



# Invitation

## Slovak ranking event – Middle and Long distance

### 19<sup>th</sup> edition CESOM 2026

Organizers	Slovak Orienteering Federation Orienteering club KOBRA Bratislava
Date	14 <sup>th</sup> – 15 <sup>th</sup> March 2026
Classification	Individual competition on Middle (Sat) and Long (Sun) distance.
Winning times	According to the Slovak O-rules for Orienteering (Pravidlá OB a Súťažný poriadok).
Event centre	Penati golf resort, Šajdíkove Humence, (GPS: 48.403136, 17.191644) – fig. no. 1.
Classes	W 12A, 14A, 16A, 18A, 20A, 21A,B, 35A, 40A, 45A, 50A, 55A, 60A, 65A, 70A, 75A M 12A, 14A, 16A, 18A, 20A, 21A,B,C, 35A, 40A, 45A, 50A, 55A, 60A, 65A, 70A, 75A
Public	W 10, M 10, MWR (accompanied children) K – short course with length approx. 3 km N – newcomers (easy course suitable for beginners),
Entries	Via <a href="https://is.orienteering.sk/competitions/1971">https://is.orienteering.sk/competitions/1971</a> or <a href="https://www.orienteeringonline.net">https://www.orienteeringonline.net</a> till 2 <sup>nd</sup> March
Entry fee	

Class	Both races	One race
Kids race	0 €	0 €
W/M12, 10, MWR, N	14 €	8 €
W/M14, 16, 60, 65, 70, 75, K	20 €	11 €
Other classes	26 €	14 €

Entry fee payment within the entry deadline by bank transfer to the account:

KOBRA Bratislava, SLSP  
IBAN SK61 0900 0000 0001 1080 4915  
SWIFT GIBASKBX

Entries since 3<sup>rd</sup> March and until 9<sup>th</sup> March 2026, or any changes will be charged by 150 % of basic entry fee and after 9<sup>th</sup> March only within the available maps for 200 % of basic entry fee.  
Changes within the class during registration will be charged by 2 €.

Cancellations since 3<sup>rd</sup> till 9<sup>th</sup> March 2026 – 50 % of registration fee will be refunded.

Cancellations after 9<sup>th</sup> March 2026 – no refund.

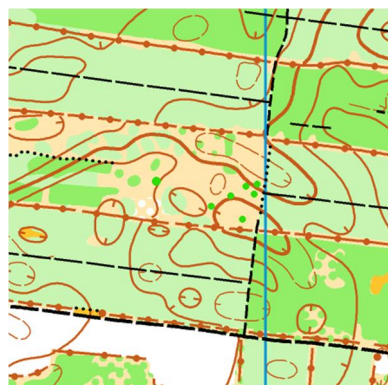
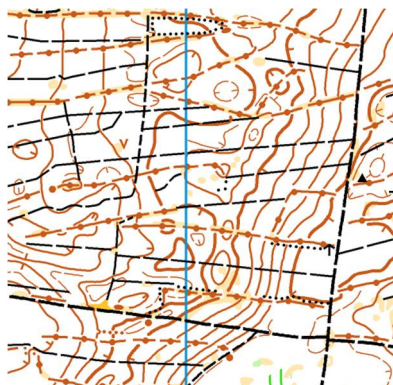
Registration	14 <sup>th</sup> March 2026 – from 9:30 till 11:00 in the event centre 15 <sup>th</sup> March 2026 – from 8:30 till 9:00 in the event centre
--------------	---

Clubs with correctly paid registration fees and without changes are not required to attend.

Accommodation	Use <a href="https://www.booking.com">booking.com</a>			
Catering	Possible in the event centre, and in nearby restaurants.			
Parking	Will be specified in Bulletin.			
Start 00	E1	14 <sup>th</sup> March 2026	13:00	interval start,
	E2	15 <sup>th</sup> March 2026	10:00	interval start.
Map	E1	Middle distance	1 : 10 000, e 2,5 m,	
	E2	Long distance	1 : 15 000, e 2,5 m, selected classes (see Instructions),	
			1 : 10 000, e 2,5 m, other classes	

Map is made according to ISOM 2017-2, mapmaker Ondrej Piják, January 2026.

Previous map: [Búre 4](#), 2016 and partly [CE\(Y\)SOM LONG 1 z roku 2013](#) . A part of the new map has not yet been used for orienteering competitions.



**Terrain description** Plain terrain, sand dunes with indistinct terrain details, clear pine forest. Mostly excellent visibility and runnability, sometimes worsened in thickets and overgrown clearings. Dense paths network.

**Forbidden area** Strict embargo on the area between Borský Mikuláš and Šajdíkove Humence, see fig. no. 2.

**Punching system** SportIdent Air+

SI-card rent: 2 €/person.  
Loss of the SI-card: 30 €

<b>Functionaries</b>	Event director	Štefan Máj	
	Main referee	Jozef Wallner	
	Course setters	Lukáš Barták	E1 – Middle distance
		Michal Stasz	E2 – Long distance
	Secretary	Karol Hierweg	

**Prizes** First three competitors according to overall time in both races will receive small prizes.

**Information** [kobra-orienteeering.sk](https://kobra-orienteeering.sk)  
e-mail: [karol.hierweg@gmail.com](mailto:karol.hierweg@gmail.com)

**Prescription** Race is held in accordance with Slovak rules for Orienteering (Pravidlá OB a Súťažný poriadok pre rok 2026).

**Notice** All starters participate in the race voluntarily and at their own risk, without the right to compensation for injury or damage caused during or because of this race.

By signing up for this race, each participant agrees to the publication of their personal data (name, category, club affiliation) in the application form, start list and results on the race website and in the SZOŠ information system.

Štefan Máj  
Event director

Jozef Wallner  
Main referee



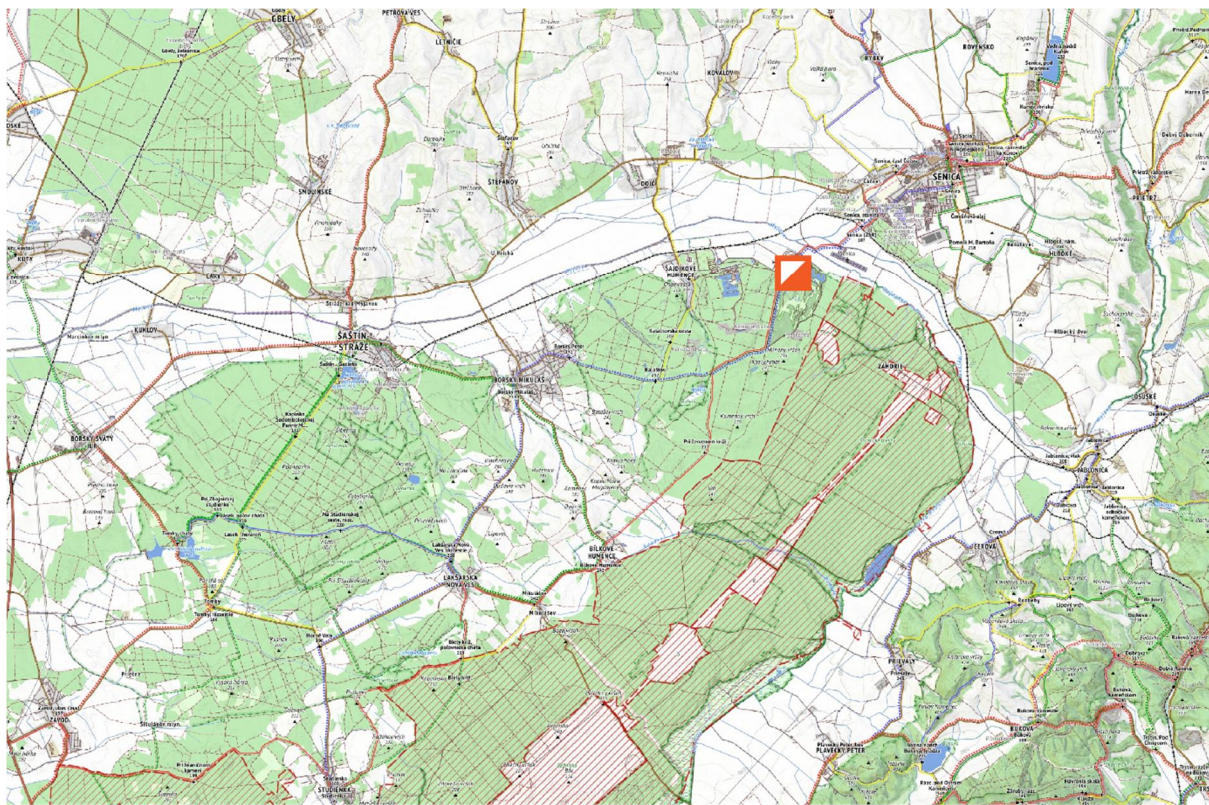


Fig. 1: Event centre of the CESOM 2026 orienteering competition (Penati Golf resort Šajdíkove Humence)

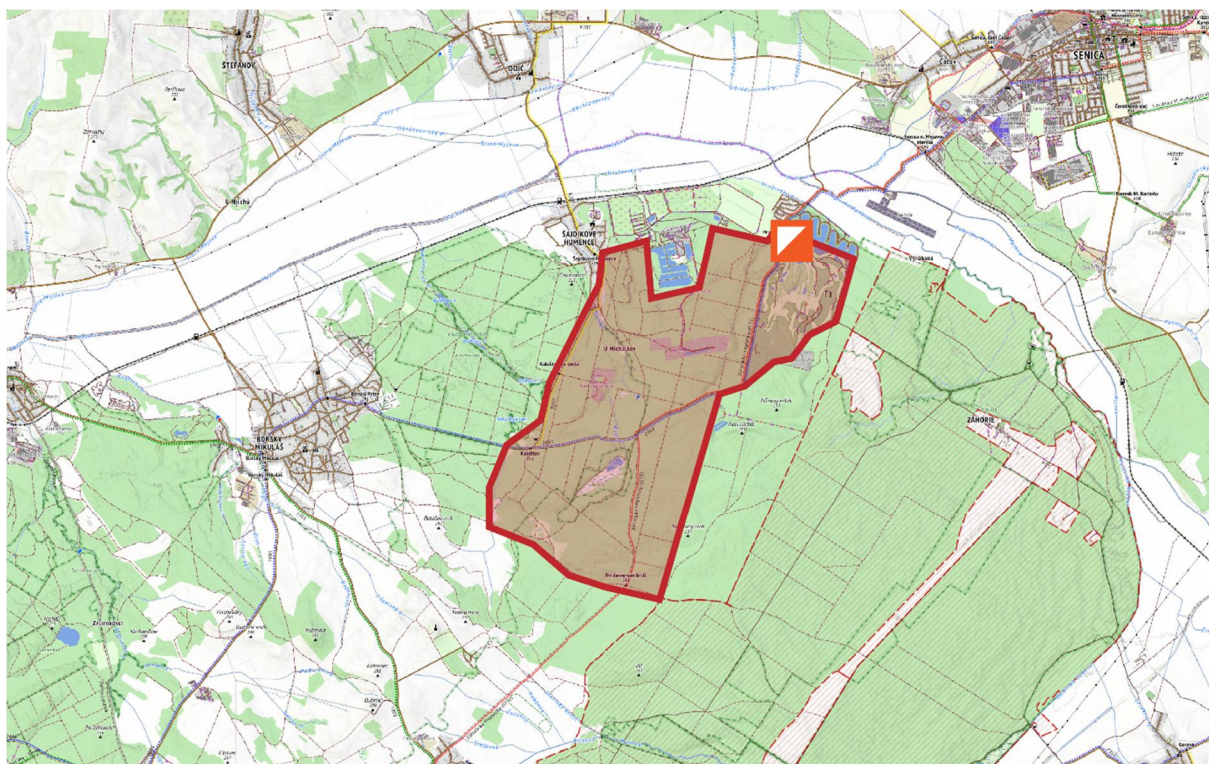


Fig. 2 Forbidden area of CESOM 2026 – strict embargo.